

# Software Issues

- [DTC Codes](#)
- [VCDS Troubleshooting](#)

# DTC Codes

VAG	DTC	Info	Tag
1882	P000000	Fehlersymptom TrbnByVlvShrtTimeDrftClsd	TrbnByVlvShrtTimeDrftClsd
2635	P310800	Low Fuel Pressure regulation Fuel pressure outside specification	BKSmax
2636	P310800	Low Fuel Pressure regulation Fuel pressure outside specification	BKSmin
2637	P310800	Low Fuel Pressure regulation Fuel pressure outside specification	BKSsig
2638	P310800	Low Fuel Pressure regulation Fuel pressure outside specification	BKSnpl
2643	U101700	ABS brake control module Read out DTC	BrkSig
2644	P057100	Cruise/Brake Switch (A) Circ. Malfunction	BrkNpl
2668	P012100	Throttle/Pedal Pos.Sensor A Circ. Range/Performance	DKnpl
2681	P032400	Knock Control System Error	DKRSA
2685	P017100	Fuel TrimBank1 System too Lean	DKVSmax
2697	P019000	Fuel Rail Pressure Sensor A Circuit	DSKVmax
2698	P019200	Fuel Rail Pressure Sensor A Circuit Low Input	DSKVmin
2700	P019200	Fuel Rail Pressure Sensor A Circuit Low Input	DSKVnpl
2705	P023800	Turbocharger Boost Sensor (A) Circ. High Input	DSLmax
2709	P115500	Manifold abs. press. sens. Short circuit to B+	DSSmax
2713	P060600	ECM/PCM Processor	DSUmax
2777	P011700	Engine Coolant Temperature Sensor 1 Circuit Low	ECTSmax
2778	P011800	Engine Coolant Temperature Sensor 1 Circuit High	ECTSmin
2779	P011600	Engine Coolant Temperature Sensor 1 Circuit Range/Performance	ECTSsig
2780	P308100	Engine temperature too low	ECTSnpl
2813	P212200	Throttle/Pedal Pos. Sens./Switch D Circuit Low Input	SRCLowAPP1
2814	P212300	Throttle/Pedal Pos. Sens./Switch D Circuit High Input	SRCHighAPP1
2815	P212700	Throttle/Pedal Pos. Sens./Switch E Circuit Low Input	SRCLowAPP2
2816	P212800	Throttle/Pedal Pos. Sens./Switch E Circuit High Input	SRCHighAPP2
2821	P217700	System too lean off idle Bank 1	FRAMax
2822	P217800	System too rich off idle Bank 1	FRAMin
2829	P017100	Fuel TrimBank1 System too Lean	FRSTmax
2830	P017200	Fuel TrimBank1 System too Rich	FRSTmin
2832	P017000	Fuel TrimBank1 Malfunction	FRSTnpl
2837	P008800	Fuel Rail/System Pressure - Too High	HDRmax
2838	P008700	Fuel Rail/System Pressure - Too Low	HDRmin
2889	P233600	Cylinder #1 Above Knock Threshold	KRA01max
2893	P233700	Cylinder #2 Above Knock Threshold	KRA04max
2897	P233800	Cylinder #3 Above Knock Threshold	KRA02max
2901	P233900	Cylinder #4 Above Knock Threshold	KRA03max
2921	P032800	Knock Sensor 1 Circ. High Input	KS1max
2922	P032700	Knock Sensor 1 Circ. Low Input	KS1min
2925	P033300	Knock Sensor 2 Circ. High Input	KS2max
2926	P033200	Knock Sensor 2 Circ. Low Input	KS2min
2937	U040200	Invalid Data Received From Transmission Control Module	ClthSig
2967	P201500	Intake Manifold Runner Position Sensor/Switch Circuit Range/Performance	LBKmax
2968	P201500	Intake Manifold Runner Position Sensor/Switch Circuit Range/Performance	LBKmin
2970	P201500	Intake Manifold Runner Position Sensor/Switch Circuit Range/Performance	LBKnpl
2971	P201000	Intake Manifold Runner Bank 1 Control Circuit High	LBKEmax
2972	P200900	Intake Manifold Runner Bank 1 Control Circuit Low	LBKEmin
2973	P200800	Intake Manifold Runner Bank 1 Control Circuit/Open	LBKEsig
2975	P200400	Intake Manifold Runner Control Bank 1 Stuck Open	LBKOmax
2977	P200400	Intake Manifold Runner Control Bank 1 Stuck Open	LBKOsig
2978	P200600	Intake Manifold Runner Control Bank 1 Stuck Closed	LBKOnpl
2983	P024600	Turbo/Sup.Charger Wasteg.Solonoid A High	LDEmax
2984	P024500	Turbo/Super Charger Wasteg.Solonoid A Low	LDEmin
2985	P024300	Turbo/Super Charger Wastegate Solonoid A	LDEsig
4007	P050700	Idle Control System RPM Higher than Expected	LLRHmax
4008	P050600	Idle Control System RPM Lower than Expected	LLRHmin
4010	P050600	Idle Control System RPM Lower than Expected	LLRHnpl
4011	P050A00	Cold Start Idle Air Control System Performance	LLRKHmax
4012	P050A00	Cold Start Idle Air Control System Performance	LLRKHmin
4019	P010800	Manifold Abs.Pressure or Bar.Pressure High Input	LMmax
4050	P227900	Intake Air System Leak	LZSRnpl
4051	P030000	Random/Multiple Cylinder Misfire Detected	MDmax
4054	P030100	Cyl.1 Misfire Detected	MD00max
4066	P133600	Engine torque monitoring Control limit exceeded	MDBmax
4087	P032200	Ign./Distributor Eng.Speed Inp.Circ. No Signal	EpmCrSNoSig
4096	P001600	Crankshaft Position-Camshaft Position Correlation Bank 1 Sensor A	EpmCaSI1OfsErr
4097	P001200	A Camshaft Position (Bank1) Timing over-retarded	NWSmax
4105	P218700	System too lean at idle Bank 1	ORAMax
4106	P218800	System too rich at idle Bank 1	ORAMin
4113	P034100	Camshaft Pos.Sensor Circ. Range/Performance	EpmCaSI1ErrSig
4114	P034000	Camshaft Position Sensor Circuit	EpmCaSI1NoSig
4115	P219500	O2 Sensor Signal Stuck Lean Bank 1 Sensor 1	PLLSUmax
4116	P219600	O2 Sensor Signal Stuck Rich Bank 1 Sensor 1	PLLSUmin
4123	P064100	Sensor Reference Voltage A Circuit Open	SSpMon1
4124	P065100	Sensor Reference Voltage B Circuit Open	SSpMon2
4125	P069700	Sensor Reference Voltage C Circuit Open	SSpMon3
4126	P010600	Manifold Abs.Pressure or Bar.Pressure Range/Performance	PSRmax
4138	P138700	Ctrl. module faulty	PUMax
4162	P023800	Turbocharger Boost Sensor (A) Circ. High Input	PVDmax
4170	P023800	Turbocharger Boost Sensor (A) Circ. High Input	PVDRmax
4171	P023700	Turbocharger Boost Sensor (A) Circ. Low Input	PVDRmin
4172	P023600	Turbocharger Boost Sensor (A) Circ. Range/Performance	PVDRsig
4173	P023600	Turbocharger Boost Sensor (A) Circ. Range/Performance	PVDRnpl
4178	P014800	Fuel Delivery Error	STHDRmax
4179	P014800	Fuel Delivery Error	STHDRmin
4201	P125000	Fuel level too low	TANKLnpl
4234	P045900	EVAP System Purge Control Valve A Circuit High	TEVEmax
4235	P045900	EVAP System Purge Control Valve A Circuit Low	TEVEmin



# VCDS Troubleshooting

## I run Windows 11 and VCDS randomly stopped working:

(See screenshots below)

1. Go ahead and uninstall VCDS.

2. Check this:  
Settings -> Update & Security -> Windows Security -> Device Security -> Core Isolation. Is "Memory integrity" turned on? If so, turn it off.  
That "feature" uses virtualization and will likely prevent the driver from loading. It is generally off by default on most systems, but I wouldn't put it past Microsoft to have it on...

3. Once you've disabled this, you can download and re-install VCDS.

Device Manager

Action View Help

Computers and electronics

Audio inputs and outputs

Batteries

Bluetooth

Cameras

Computer

Disk drives

Display adapters

Firmware

Human Interface Devices

IDE ATA/ATAPI controllers

Keyboards

Mice and other pointing devices

Monitors

Network adapters

Other devices

Ross-Tech HEX-USB

Print queues

Printers

Processors

Security devices

Software components

Software devices

Sound, video and game controllers

Storage controllers

System devices

### Ross-Tech HEX-USB Properties

General Driver Details Events



Ross-Tech HEX-USB

Device type: Other devices

Manufacturer: Unknown

Location: Port\_#0004.Hub\_#0002

#### Device status

The drivers for this device are not installed. (Code 28)

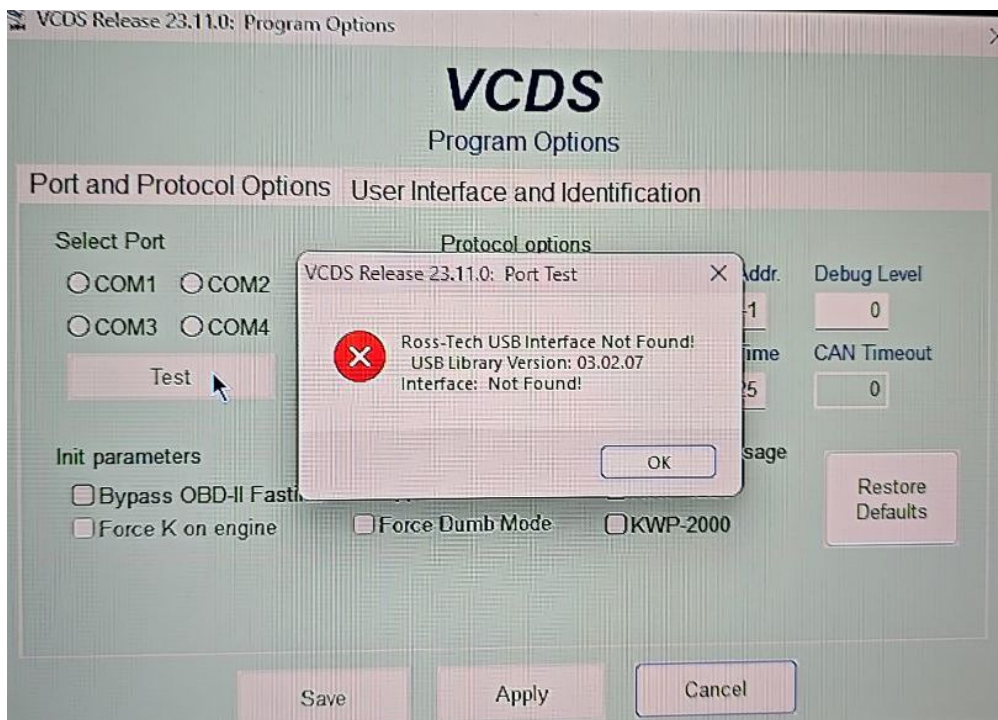
There are no compatible drivers for this device.

To find a driver for this device, click Update Driver.

Update Driver...

OK

Cancel



(Credit to D. Bui)